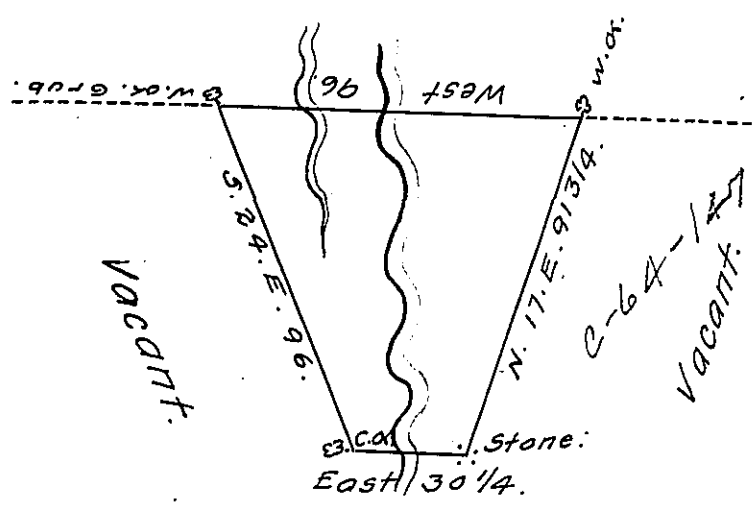


Land intended for
George Bealer.



Mountain.

In pursuance of a warrant Dated the 15th. Day of December,
 Anno Domini, 1791. Surveyed on the third day of September,
 1792. unto Patrick Hunselman the above described Tract of Land
 situate (obliterated) Township, Berks County, contain-
 ing 32⁹⁵.104. and Allowance of six $\frac{1}{2}$ Cent. for Roads &c.
 To Danl. Brodhead, Esqr, } Wm. Wheeler, D. Sur.
 SURVE Genl. of Pennsylvania. }

IN TESTIMONY that the above is a copy of the original remaining on file in
 the Department of Internal Affairs of Pennsylvania, made
 conformably to an Act of Assembly approved the 16th day of
 February, 1833, I have hereunto set my Hand and caused
 the Seal of said Department to be affixed at Harrisburg,
 this third day of August 1911.

Henry Houck,
 Secretary of Internal Affairs.